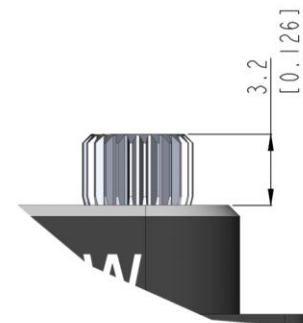
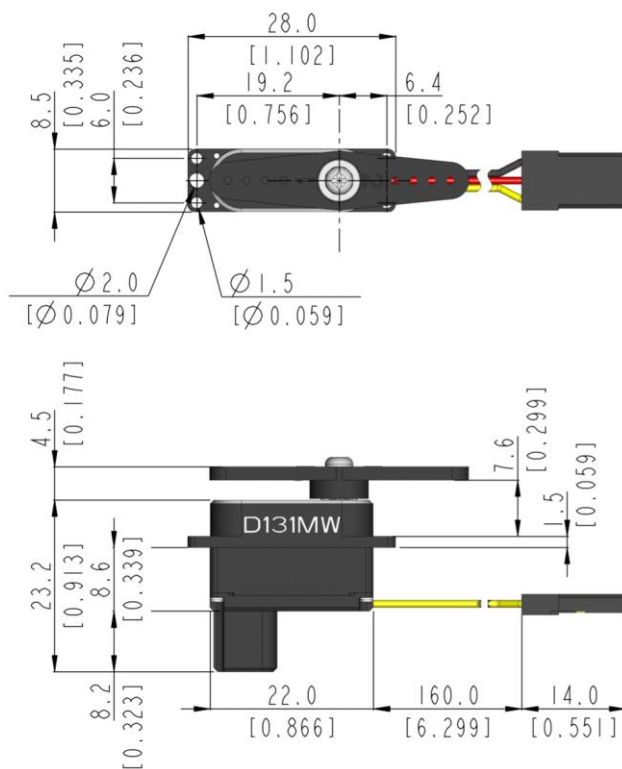


D131MW General Specification.



Control System	PWM/TTL(Half Duplex)			-
Position Sensor Type	Contact Analog Potentiometer			-
Motor Type	Coreless			At the Max voltage, it is recommended to be used only for a short time duration.
Operating Voltage Range	3.5 ~ 8.4V			
Voltage	4.8V	6.0V	7.4V	At 25°C(±10%), 45%RH(±10%) <u>measurement environment</u>
No Load Speed	0.16sec/60°	0.13sec/60°	0.11sec/60°	
Stall Torque	1.9kgf-cm (26.39oz-in)	2.4kgf-cm (33.33oz-in)	2.9kgf-cm (40.27oz-in)	
Peak Efficiency Torque	0.40kgf-cm (5.55oz-in)	0.50kgf-cm (6.94oz-in)	0.60kgf-cm (8.33oz-in)	
Standing Current	30mA	30mA	30mA	
No Load Running Current	75mA	90mA	110mA	
Stall Current	700mA	800mA	900mA	
Deadband	2μs	2μs	2μs	
Operating Travel	Default: ±60°, Programmable: Max 175° / Pulse Width: 900~2100μs(Center:1500μs)			-
Continuous Rotation	n/a			-
Operating Temperature Range	-20°C ~ +60°C (-4°F ~ +140°F)			-
Storage Temperature Range	-30°C ~ +80°C (-22°F ~ +176°F)			-
Connector Wire Length	160mm (6.299inch)			 <ul style="list-style-type: none"> 1. SIGNAL 2. VCC 3. GND
Connector Wire Gauge	28AWG			
Dimensions	22.0mm x 8.5mm x 23.2mm (0.866inch x 0.335inch x 0.913inch)			General Tolerance ±0.1mm
Weight	9.8g (0.346oz)			Excluding the weight of Horn
Bearing Type	2 Ball Bearing			-
Case Material	Aluminum Alloy			-
Gear Material	5 Metal Gears			-
Gear Train Backlash	Max 0.5°			-
Horn Gear Spline	M25T(Ø5)			-
IP-Rating	IP4X			-
Servo Amplifier Type	32bit Programmable Digital			-



1:1 scale (Unit : mm[inch])

- This product should not be used directly on the human body for medical purposes.
- This product should not be used for war weapons.
- All specifications are subject to change without notice.

